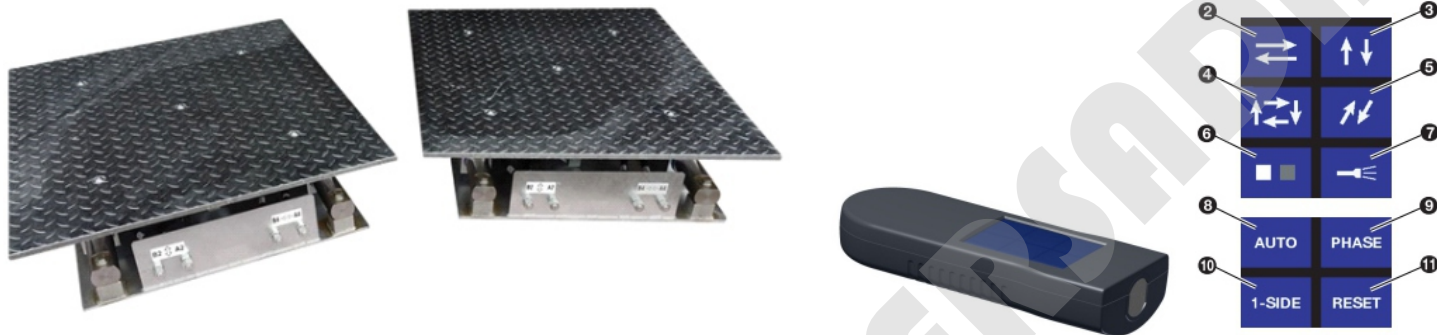


Altus — AXLE PLAY DETECTOR

The ESCON hydraulic play detector for heavy vehicles is designed to check quickly and efficiently most steering and suspension components. It lets a technician detect play and wear in the wheel guiding and steering parts. The play detector consists of an hydraulic power control unit with control lamp and two moving platforms, each with a hot dip zinc chequered plate. Each platform is actuated by two hydraulic cylinders. A wireless RF control lamp (PD5730) are available & touch screen display.



SPECIFICATIONS :

Maximum drive over weight : 30,000 kg per axle, 15,000 kg per wheel

Maximum horizontal force : 30 kN per plate

Longitudinal/transversal movement : 100 mm

Movement speed : 40 mm/s

Motor :

Power : 3.0 kW

Voltage : 3 phase, 400 V, 50 Hz

Cable Hose length PD 5730 : 6.5 m

Working pressure : 150 bar

Dimensions and weight :

Play detector plate Dimensions 950 x 800 x 217 mm (l x w x h)

Weight 300 kg each

Hydraulic control unit Dimensions 360 x 300 x 875 mm (d x w x h)

Weight 36 kg

Wireless control lamp & touch screen

Working range : up to 10 m without obstacles

Standby time : up to 3 months with fully charged batteries

Working time with power-LED on : up to 4 hours with fully charged batteries

Working time with power-LED off : up to 10 hours with fully charged batteries

Charging time : up to 5 hours in case of fully discharged batteries

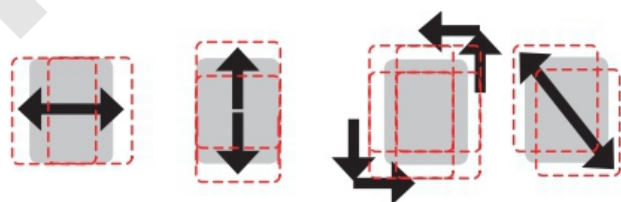
Batteries : 2 x AA NiMH rechargeable, capacity 1900 – 2500 mAh (Sanyo Eneloop HR-3UTGA recommended)

Battery charger : 5 VDC stabilized, min. 1 A

Hydraulics:

Fluid type : H46

Tank volume : 10 L



Diagnostic equipment for specialists!



Altus-Escon-Company BV
 Drachmeweg 26
 NL-2153PA Nieuw Vennepe
 Netherlands

altesco
 altus-escon-company
 altus-escon-company
 altus-escon-company

www.cvbip.com
 info@cvbip.com
 Tel: +62 (21) 5568 9528
 Hotline: +62 811 9126 268

